

U.S. Army Public Health Center

Army Influenza Activity Report

Week ending 01 February 2020 (week 5)

Influenza Vaccination Coverage*

As of 30 January 2020

N/A	DoD
94%	Army Active Duty
87%	Army Guard
80%	Army Reserve

*Data Source: MEDPROS, ASIMS, MRRS

SUMMARY

During week 5, 7,498 specimens were submitted for testing, which represents a 15.8% increase from week 4. Influenza A accounted for the majority (68.5%) of positive specimens submitted for testing; 71% of positive influenza A specimens were among non-AD beneficiaries. Beneficiaries younger than 18 years old accounted for the majority (67%) of total positive respiratory specimens, which was followed by those 18 to 29 years of age (6.2%). Sixteen influenza-associated hospitalizations were reported in week 5.

GEOGRAPHIC SPREAD

Click to enlarge image



A Weekly Influenza Surveillance Report Prepared by the Influenza Division
Weekly Influenza Activity Estimates Reported by State and Territorial Epidemiologists*

Week Ending Feb 01, 2020 - Week 5

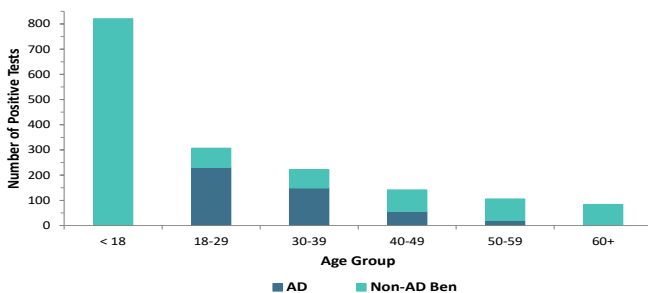


*This map indicates geographic spread and does not measure the severity of influenza activity.

In week 5, widespread activity was reported in Puerto Rico and 48 states. Regional activity was reported in Hawaii and Oregon. Local activity was reported in the District of Columbia. Sporadic activity was reported in the U.S. Virgin Island, and Guam did not report.

DEMOGRAPHICS

Positive Respiratory Specimen Results from Army MTFs by Age Group and Beneficiary Status, Week 4

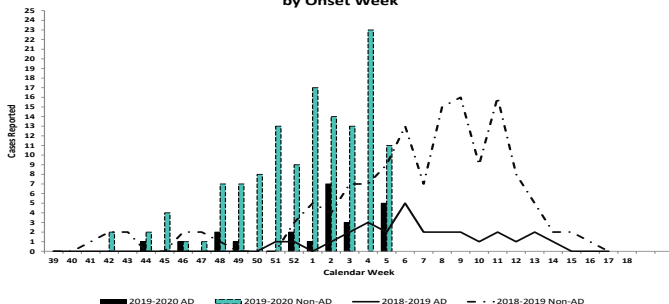


AD: In week 5, 457 positive respiratory specimens from Active Duty (AD) Service Members (SM) were submitted. The majority of positive specimens were among those 18 to 29 years of age (n=231, 50.5%) and was followed by those 30 to 39 years of age (n=149, 32.6%).

Non-AD: The majority of positive respiratory specimens among non-Active Duty beneficiaries were collected from individuals younger than 18 years of age (n=821, 67%).

INFLUENZA-ASSOCIATED HOSPITALIZATIONS

Army Influenza-Associated Hospitalizations Reported in DRSi by Onset Week



So far this season, a total of 155 hospitalizations have been reported to the DRSi; this represents a 181.8% increase in hospitalizations reported compared to last season during the same period. Sixteen influenza-associated hospitalizations with onset dates in week 5 were reported to the DRSi; 13 hospitalizations were due to influenza A and three were due to influenza B. Out of those, five cases reported receiving the vaccine.

*DRSi does not capture cases older than 65 years old for influenza-associated hospitalizations.

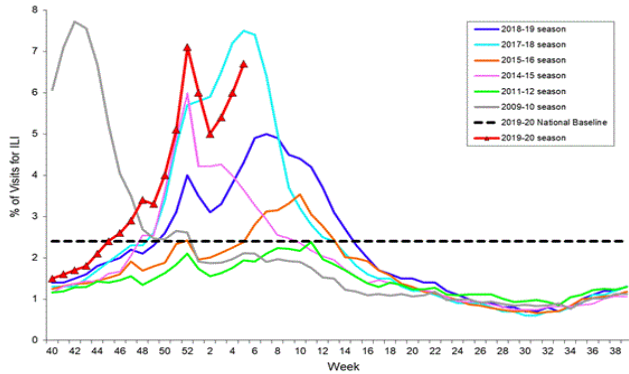
Additional Resources: [APHC Influenza Reports](#), [Centers for Disease Control](#), [Disease Reporting System internet](#), [ESSENCE](#)

Key: ILI-Influenza-Like Illness; DRSi- Disease Reporting System Internet; ADV-Adenovirus; RSV-Respiratory Syncytial Virus; SM-Service Member; MEDPROS- Medical Protection System; ASIMS- Aeromedical Services Information Management System; MRRS- Medical Readiness Reporting System

Questions?
Email [APHC DEP](#)
410-436-7605

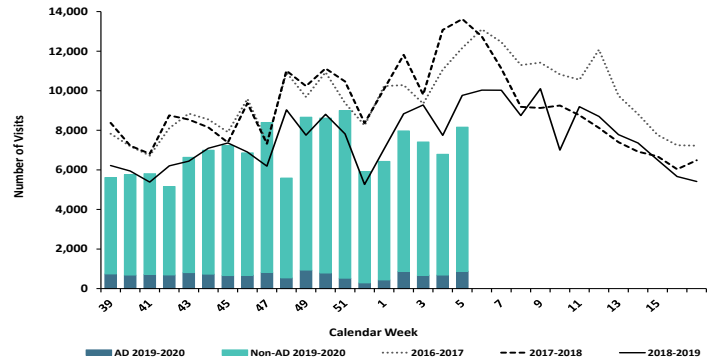
ILI ACTIVITY - UNITED STATES

Percentage of Visits for Influenza-like Illness (ILI) Reported by the U.S. Outpatient Influenza-like Illness Surveillance Network (ILINet), Weekly National Summary, 2019-2020 and Selected Previous Seasons



ILI ACTIVITY - ARMY

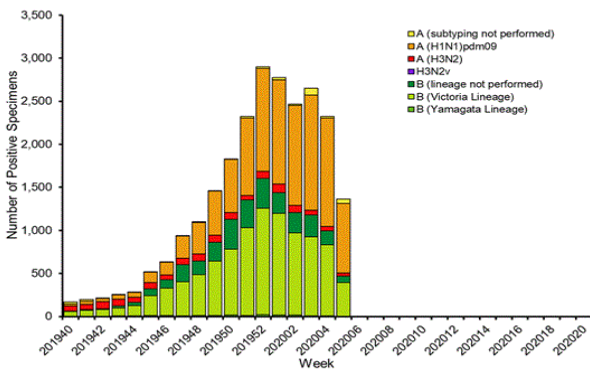
ESSENCE Weekly Outpatient Clinic Visits for Influenza-like Illness Army MTFs, All Services, 2016-2020



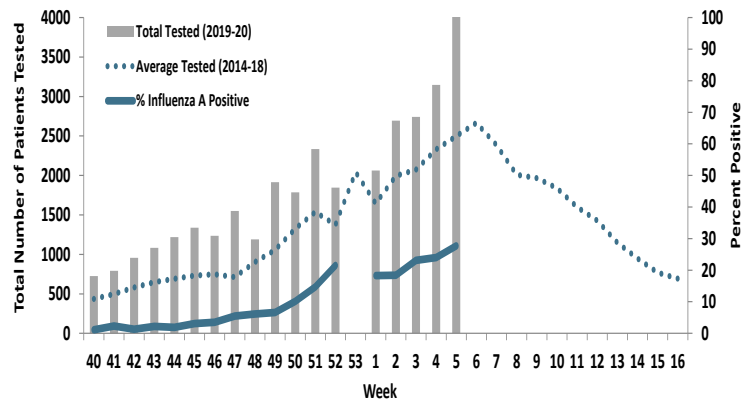
Nationwide in week 5, incident ILI activity was 6.7%. This is above the national baseline of 2.4%. Regionally, the percentage of outpatient visits for ILI ranged from 4.0% to 10.9%. All regions reported a percentage of outpatient visits for ILI above their region-specific baselines. At Army medical treatment facilities, incident ILI activity increased overall from week 4 to week 5 by 20.2%, while activity for AD SMs increased by 28.3%.

LABORATORY RESPIRATORY SPECIMEN TESTING

Influenza Positive Tests Reported to CDC by U.S. Public Health Laboratories, National Summary, 2019-2020 Season



Proportion of Positive Influenza A Specimens for U.S. Army 2019-2020



Nationwide, 2,129 specimens were submitted to CDC in week 5, of which 64.1% (n=1,365) were positive. Influenza A accounted for 65.8% (n=898) of the total positive specimens submitted to the CDC in week 5, while influenza B accounted for 34.2% (n=467). In the Army population, 27.7% of 4,286 specimens tested for influenza A were positive.

		Week 2	Week 3	Week 4	Week 5	Season Total
Test Types Among Positive Influenza A Specimens	RAT	268	364	445	779	2687
	Culture	7	4	2	0	48
	PCR	227	282	338	328	2074

Army MTF Laboratory Results, 2019-20	Influenza A	502	650	785	1107	4809
	Influenza B	433	537	548	485	4328
	Adenovirus	12	19	14	16	187
	Enterovirus	0	0	0	0	7
	Parainfluenza	11	3	7	4	199
	RSV	128	3	7	4	1364
	Negative	4748	4486	5111	5882	59278
	Total	5834	5698	6472	7498	70172

Of the 7,498 respiratory specimens tested in week 5, 1,616 (21.6%) were positive for any type of respiratory illness. Influenza A accounted for the majority of positive results in week 5, with 68.5% (n=1105) of all positive lab results. This was followed by influenza B, which accounted for 30% (n=485) of positive lab results. Respiratory syncytial virus (RSV), adenovirus, and parainfluenza accounted for less than 1% each.

Rapid antigen tests represented 70.4% of the positive influenza A tests, followed by PCR tests (29.6%).

Locations providing week 5 laboratory data as of 29 January 2020: Ft. Belvoir, Ft Benning, Ft Bliss, Ft Bragg, Ft Campbell, Ft Carson, Ft Gordon, Ft Hood, Ft Huachuca, Ft Irwin, Ft Jackson, Ft Knox, Ft Leavenworth, Ft Lee, Ft Leonard Wood, Ft Meade, Ft Polk Ft Riley, Ft Rucker, Ft Sam Houston, Ft Stewart, Ft. Wainwright, Korea, Landstuhl Regional Medical Center, Redstone Arsenal, Tripler Army Medical Center, the U.S. Military Academy, and Walter Reed National Military Medical Center.

*NOTE: Madigan AMC data is also received weekly, but cannot be included at this time due to reporting limitations from MHS Genesis.

LABORATORY RESPIRATORY SPECIMEN TESTING

Region	Installation	Influenza A			Influenza B			Adenovirus		
		No. Tested	% Positive	Baseline % Positive	No. Tested	% Positive	Baseline % Positive	No. Tested	% Positive	Baseline % Positive
PHCA	Ft. Belvoir	441	23.4	24.6	252	22.2	0	111	9.9	11.4
	Ft. Benning	323	21.7	11.9	324	13	0			
	Ft. Bragg	409	27.6	31.6			9.8			
	Ft. Campbell	233	21.9	25.4	234	7.3	0			100
	Ft. Drum	12	16.7	0	3	100	100			100
	Ft. Eustis	10	30	27.3	2	100	100			
	Ft. Gordon	190	26.3	22.2	186	2.7	0			100
	Ft. Jackson	157	19.1	22	157	14	0			
	Ft. Knox	5	80	25.6	5	0	0			
	Ft. Lee	63	11.1	17.1	12	100	100			
	Ft. Meade	35	28.6	66.7						
	Ft. Rucker	43	14	20	43	2.3	0			
	Ft. Stewart	210	29	36.5	207	6.3	0			100
	Redstone Arsenal	35	14.3	40	35	11.4	0			
West Point Military Academy	178	43.3	40.4	128	28.1	0			100	
PHCC	Ft. Bliss	425	18.1	18.8	231	33.8	0.6			9.1
	Ft. Carson	248	21.8	15.1			100			
	Ft. Hood	275	23.3	25.3	265	2.3	0	42	4.8	7.7
	Ft. Huachuca	58	25.9	14.8	59	13.6	6.7			
	Ft. Irwin	125	19.2	38.9	123	4.9	3.4			
	Ft. Leavenworth	44	15.9	13.6	44	34.1	0			
	Ft. Leonard Wood	170	4.7	19	171	20.5	1.7			
	Ft. Polk	76	10.5	17	13	100	100			
	Ft. Riley	125	11.2	25	125	17.6	1.2			
Ft. Sam Houston	544	29.6	33.4	552	11.1	1.7			100	
Ft. Sill	126	15.1	5.2	37	100	100				
PHCE	Landstuhl Regional Medical Center	134	23.9	17.9	102	9.8	0	102	3.9	2.3
PHCP	Ft. Wainwright	73	24.7	57.4	74	16.2	0.9			
	Korea	123	18.7	19.4	28	0	0	28	0	3.3
	Tripler Army Medical Center	138	32.6	8.9	133	6.8	0	7	0	3.6
Region	Installation	Enterovirus			Parainfluenza			RSV		
		No. Tested	% Positive	Baseline % Pos.	No. Tested	% Positive	Baseline % Pos.	No. Tested	% Positive	Baseline % Pos.
PHCA	Ft. Belvoir				114	0.9	0	250	9.6	7.8
	Ft. Bragg									23.5
	Ft. Campbell						100			100
	Ft. Drum							1	100	100
	Ft. Gordon						100			100
	Ft. Stewart						100	15	13.3	22.2
	West Point Military Academy						100			100
PHCC	Ft. Bliss							204	5.4	9.3
	Ft. Carson							35	34.3	33.3
	Ft. Hood				43	2.3	3.7	90	7.8	5.1
	Ft. Leavenworth							3	0	0
	Ft. Polk							6	0	11.1
	Ft. Riley							31	16.1	9.1
	Ft. Sam Houston						100			100
Ft. Sill							4	0	0	
PHCE	Landstuhl Regional Medical Center				103	1.9	2.2	111	9	18.4
PHCP	Ft. Wainwright							74	9.5	4.7
	Korea			0	28	0	0	28	14.3	9.7
	Tripler Army Medical Center	7	0	0	7	0	1.8			100

No.: Number of specimens tested during MMWR week 5 2020.

% Pos.: Percentage of positive specimens reported during MMWR week 5 2020.

Baseline % Pos.: Percentage of positive specimens reported in MMWR week 34 during influenza seasons from September 2012 - May 2019.

Missing values indicate that specimens were not tested for the disease during the week of interest.

A Weekly Influenza Surveillance Report Prepared by the Influenza Division

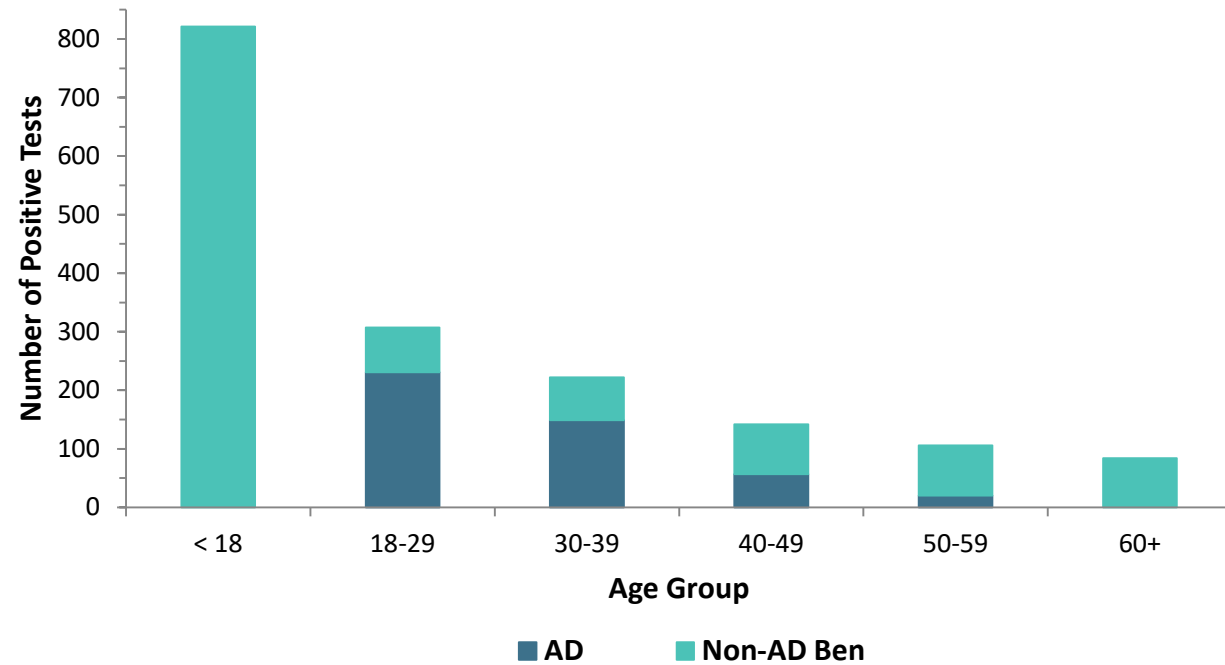
Weekly Influenza Activity Estimates Reported by State and Territorial Epidemiologists*

Week Ending Feb 01, 2020 - Week 5



*This map indicates geographic spread and does not measure the severity of influenza activity.

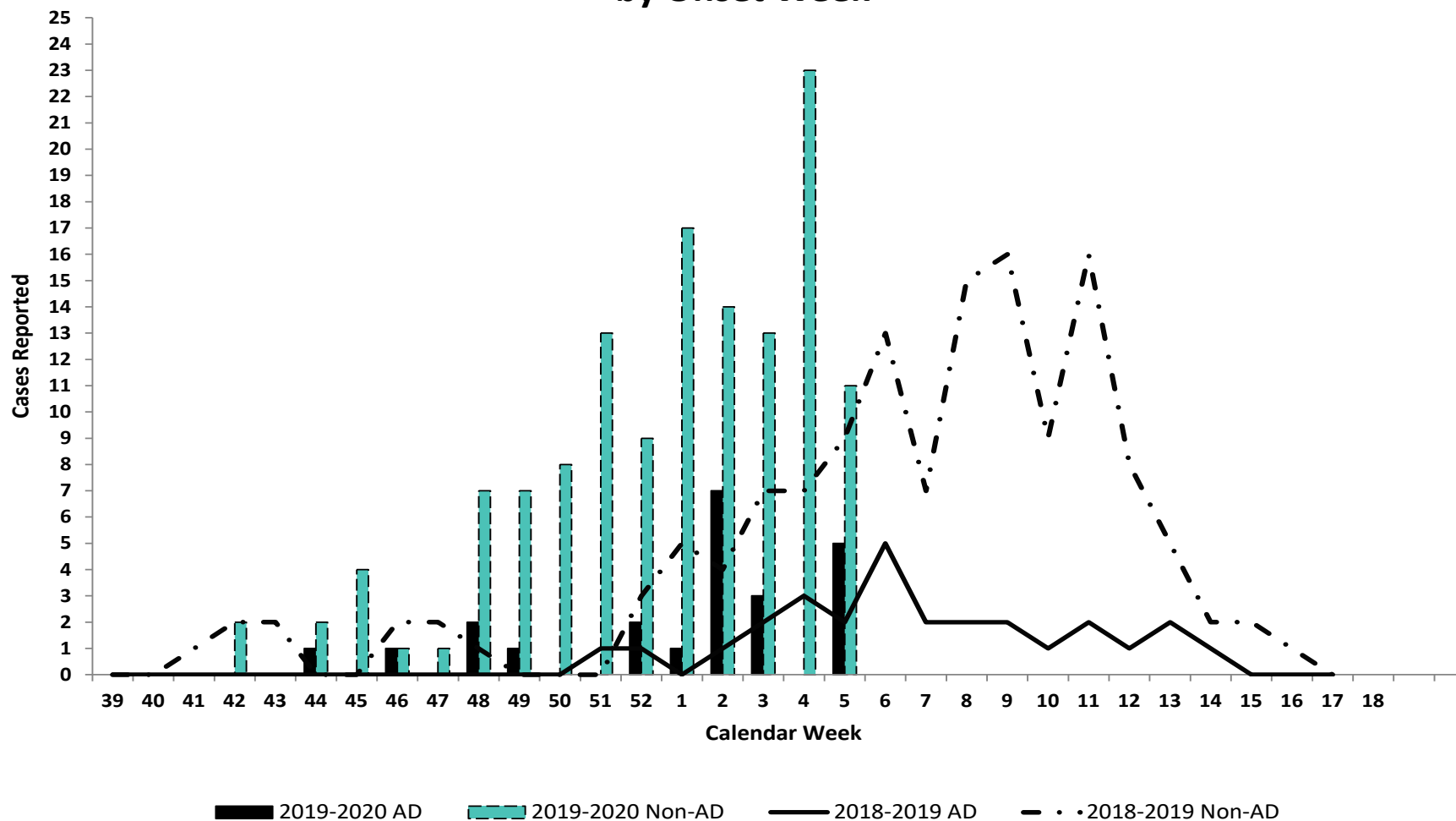
Positive Respiratory Specimen Results from Army MTFs by Age Group and Beneficiary Status, Week 5



Week 5			
Age Group	AD	Non-AD Ben	Season Total
< 18	0	821	6069
18-29	231	76	1819
30-39	149	73	1270
40-49	57	85	690
50-59	20	86	527
60+	0	84	519
Total	457	1225	10894



Army Influenza-Associated Hospitalizations Reported in DRSi by Onset Week



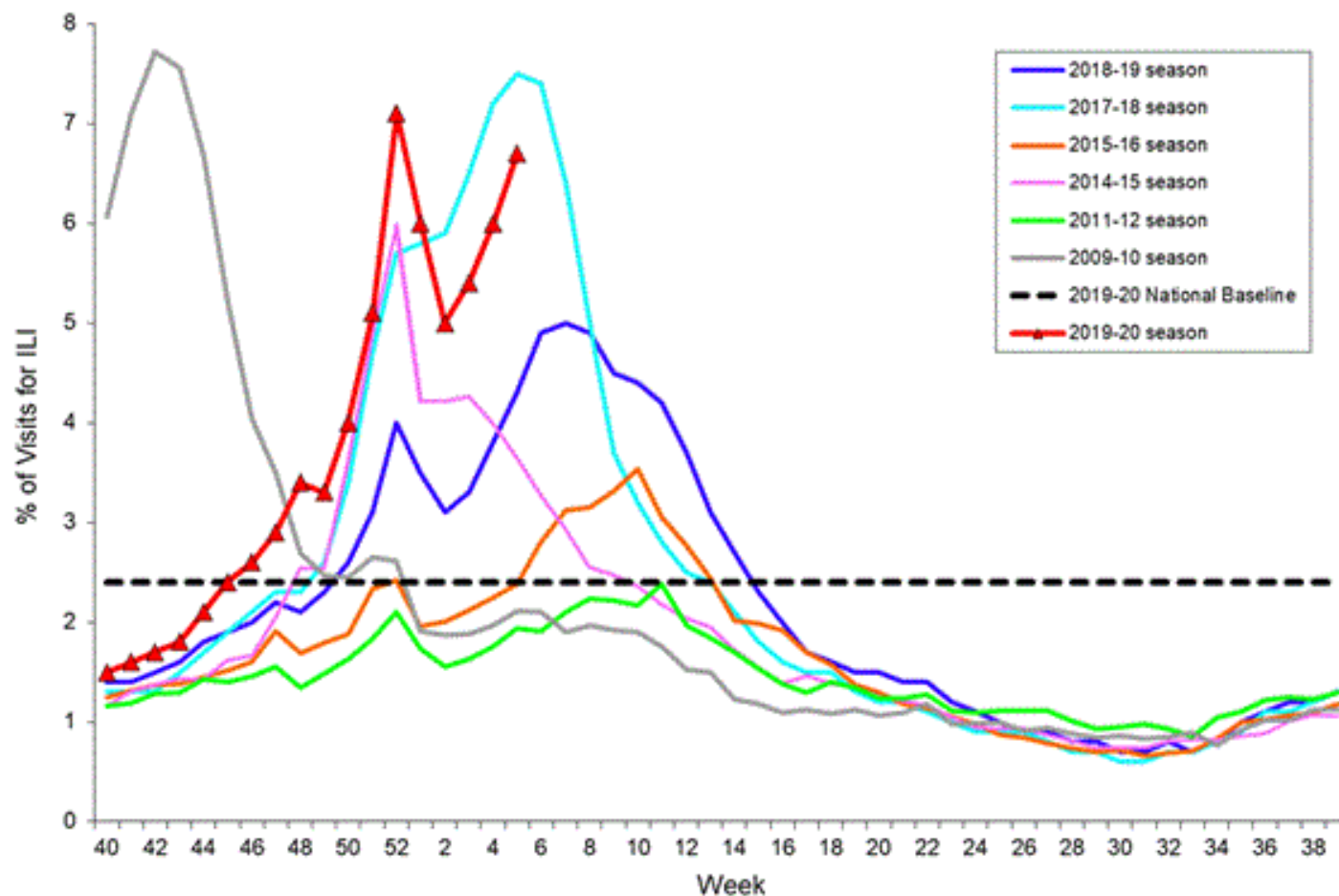
Note: Reportable influenza cases are defined as only cases that have been hospitalized and are under the age of 65.
Data as of 14 January 2020.

FLUVIEW



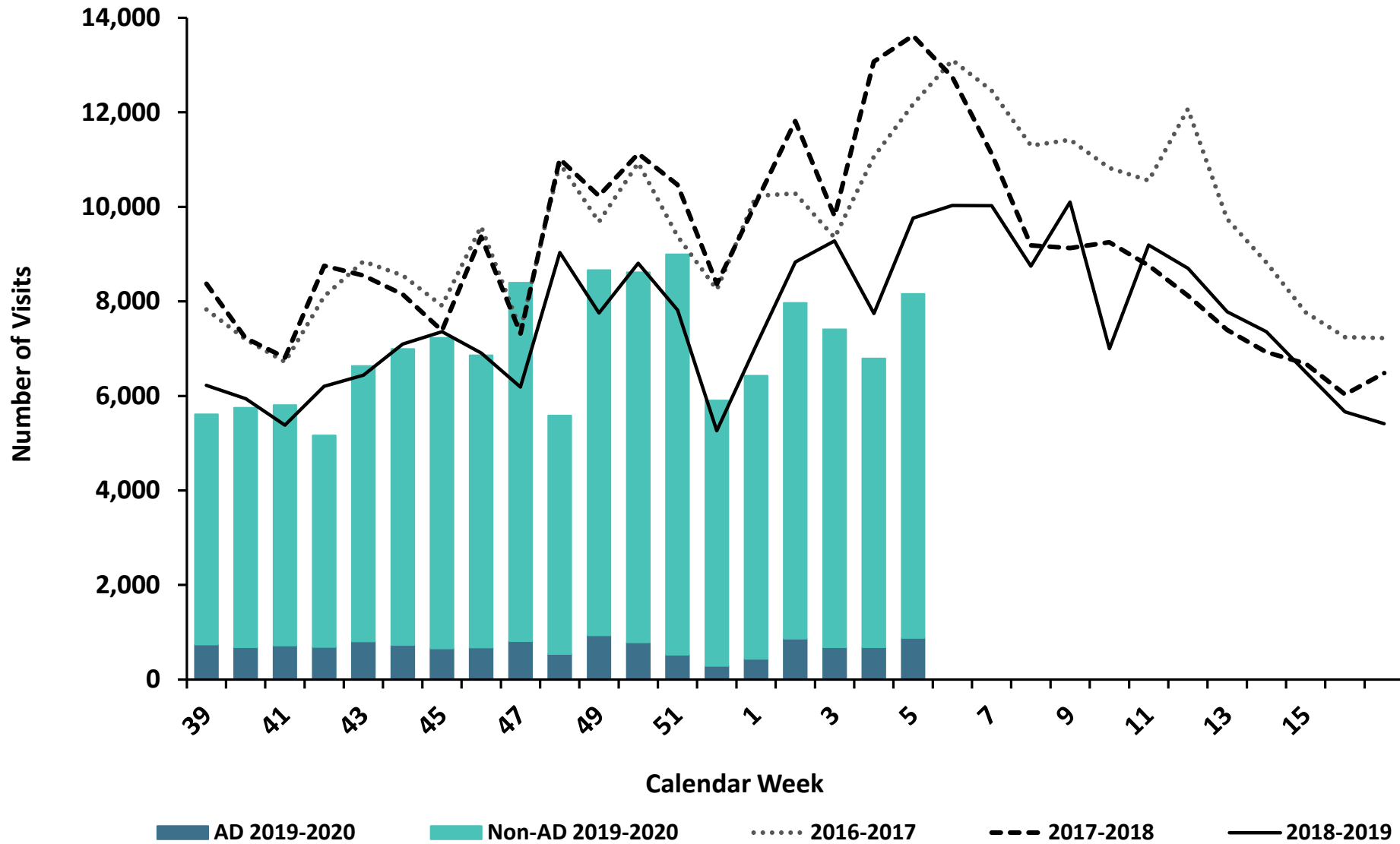
A Weekly Influenza Surveillance Report Prepared by the Influenza Division

Percentage of Visits for Influenza-like Illness (ILI) Reported by the U.S. Outpatient Influenza-like Illness Surveillance Network (ILINet), Weekly National Summary, 2019-2020 and Selected Previous Seasons



ESSENCE Weekly Outpatient Clinic Visits for Influenza-like Illness

Army MTFs, All Services, 2016-2020

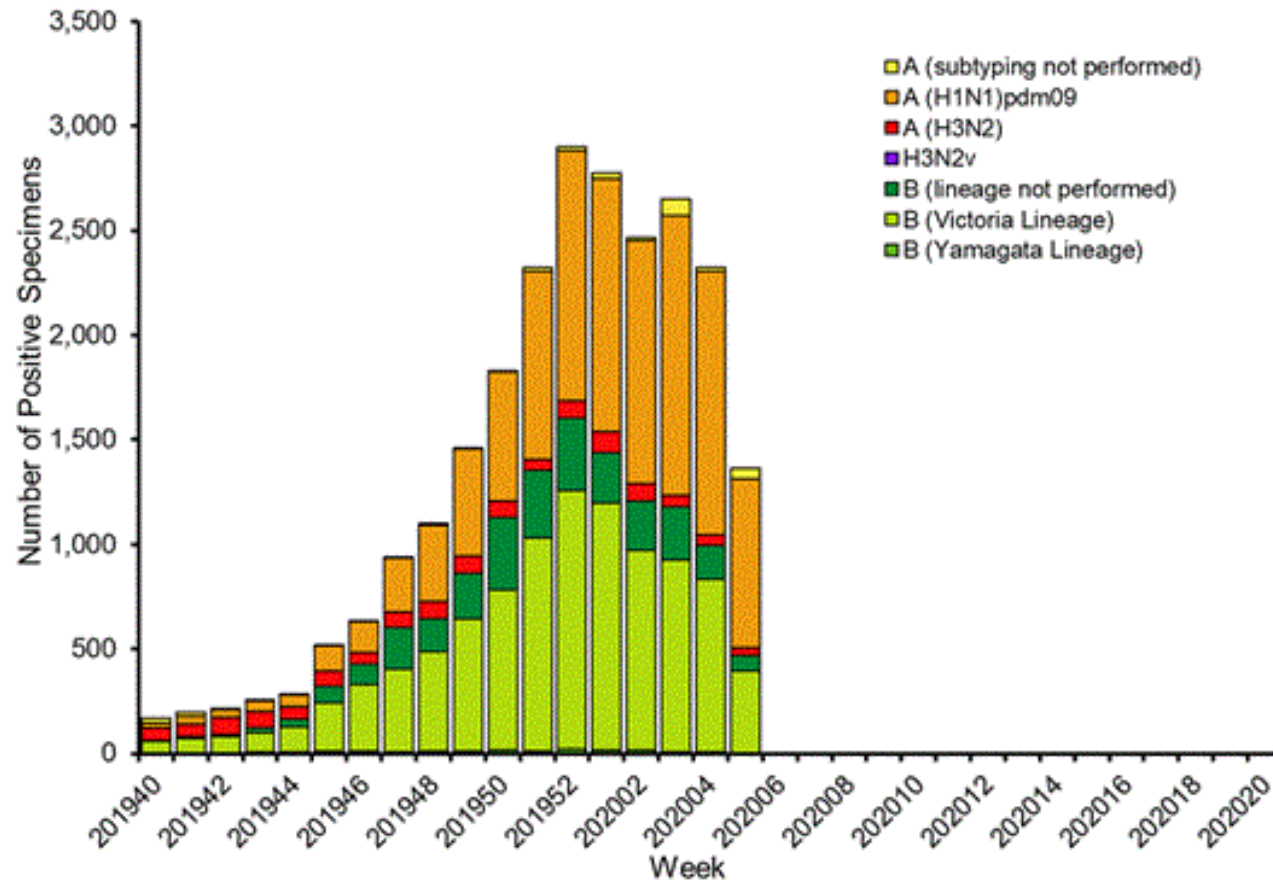


FLUVIEW

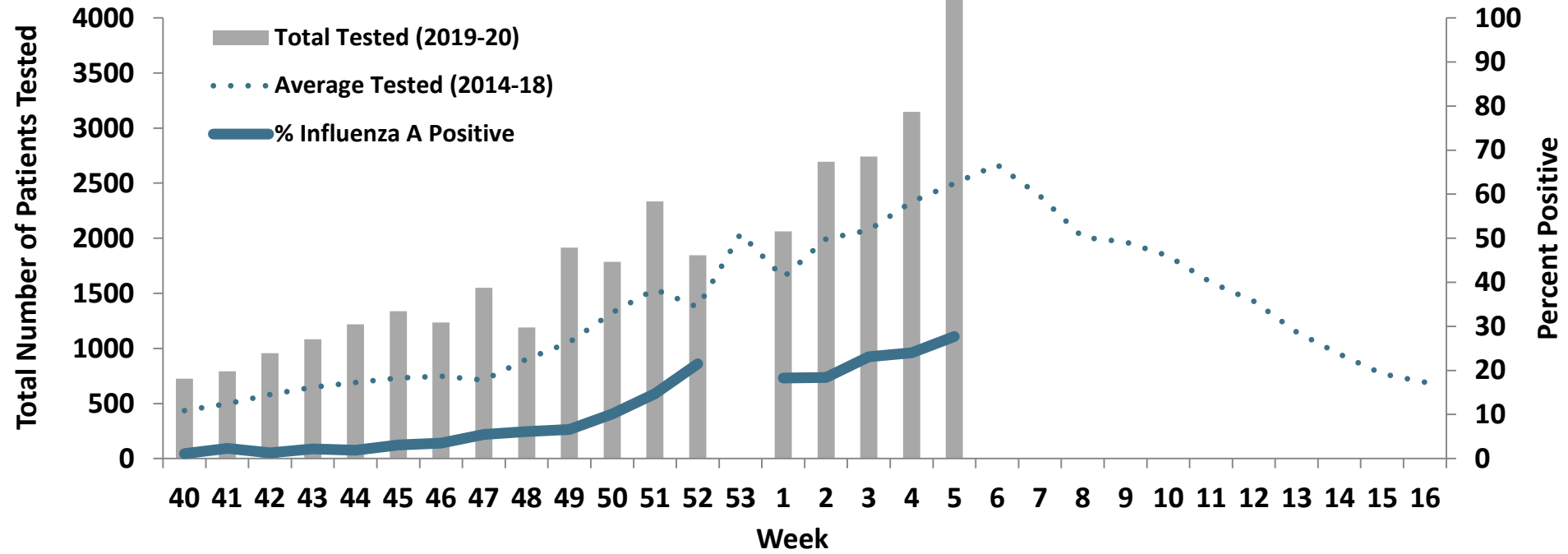


A Weekly Influenza Surveillance Report Prepared by the Influenza Division

Influenza Positive Tests Reported to CDC by U.S. Public Health Laboratories, National Summary, 2019-2020 Season



Proportion of Positive Influenza A Specimens for U.S. Army 2019-2020



Laboratory Respiratory Specimen Testing – Weeks 2 – 5, 2020

		Week 2	Week 3	Week 4	Week 5	Season Total
Test Types Among Positive Influenza A Specimens	RAT	268	364	445	779	2687
	Culture	7	4	2	0	48
	PCR	227	282	338	328	2074

Army MTF Laboratory Results, 2019-20	Influenza A	502	650	785	1107	4809
	Influenza B	433	537	548	485	4328
	Adenovirus	12	19	14	16	187
	Enterovirus	0	0	0	0	7
	Parainfluenza	11	3	7	4	199
	RSV	128	3	7	4	1364
	Negative	4748	4486	5111	5882	59278
	Total	5834	5698	6472	7498	70172

